

## Installing Crashplan on Mac OS X

1. Viterbi IT will provide you with the download link to the Crashplan installation files. You may also submit a service request to the Viterbi Service Desk by logging into <https://myviterbi.usc.edu/> or email [engrhel@usc.edu](mailto:engrhel@usc.edu).
2. Run the Crashplan installation file.



- Click **Continue** to start the installation.



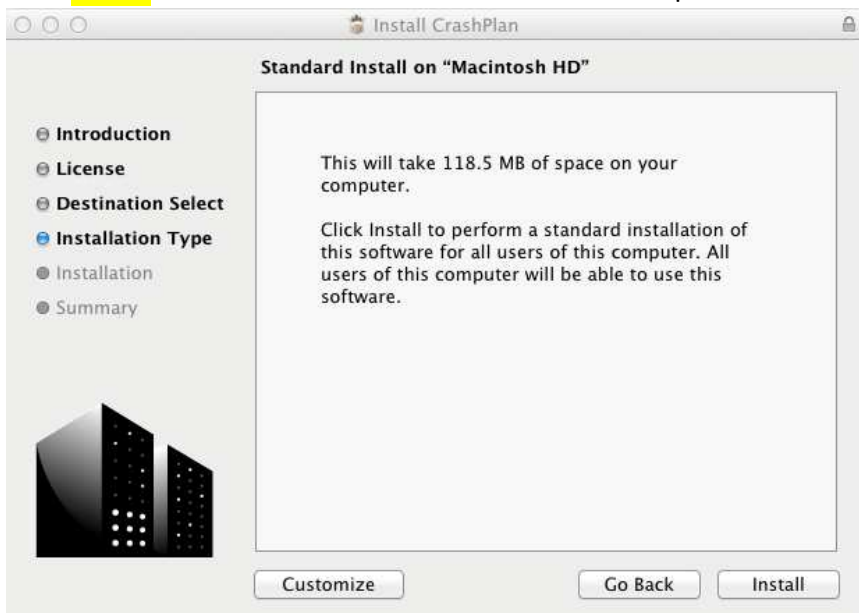
- Click **Continue** to accept the license agreement.



5. Click **Agree** to continue the installation.



6. Click **Install**. Enter a local Administrator account and password.



7. Choose existing account and enter your USC user name and password. Click **Login**.

The screenshot shows a web browser window titled 'CrashPlan PROe'. The main content area is titled 'Use existing account' and contains the following text: 'Please enter your username and password. This information identifies you and encrypts your files so nobody else can access them.' Below this text are two radio buttons: 'New Account' (unselected) and 'Existing Account' (selected). A red-bordered box titled 'USCnet Login' is embedded within the page. Inside this box, it says: 'The resource you requested requires you to authenticate using your USC NetID (also known as your "username") and password.' Below this is a form with two input fields: 'USC NetID:' and 'Password:'. A 'Login' button is positioned below the password field. Outside the red box, at the bottom right of the main content area, is a blue 'Sign In' button.

8. Once your credentials have been verified click **Sign in**.

The screenshot shows the same web browser window as above. The main content area now displays a success message: 'Success. Please click Sign In below.' The message is centered and accompanied by a green checkmark icon. The 'Existing Account' radio button remains selected. The 'Sign In' button at the bottom right is still visible.

9. The backup process will start automatically and will run in the background. You may close the window. The first backup can take several hours to a day depending on data size and internet connections speed.

