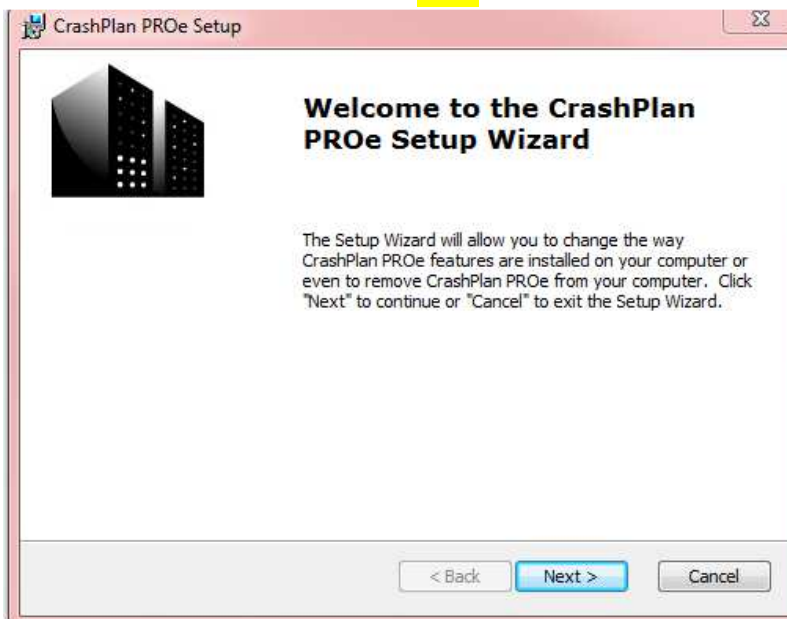
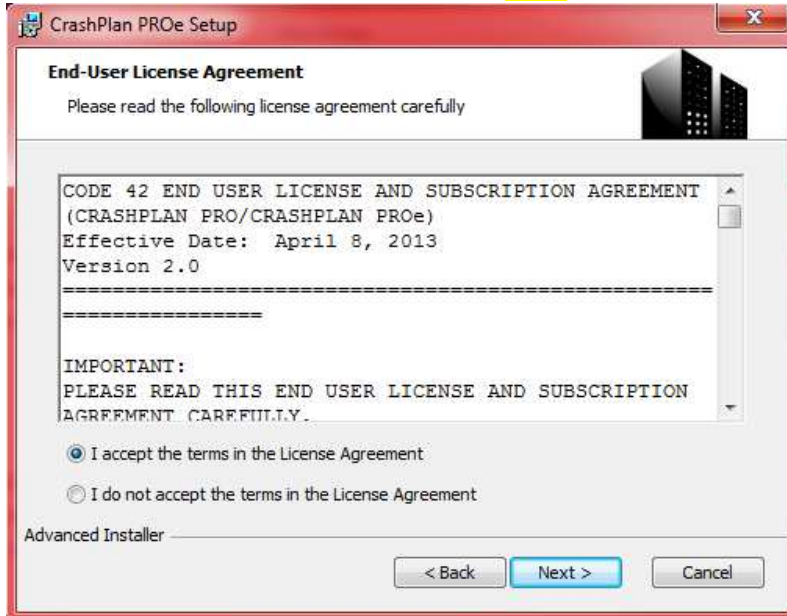


Installing Crashplan on Windows 7

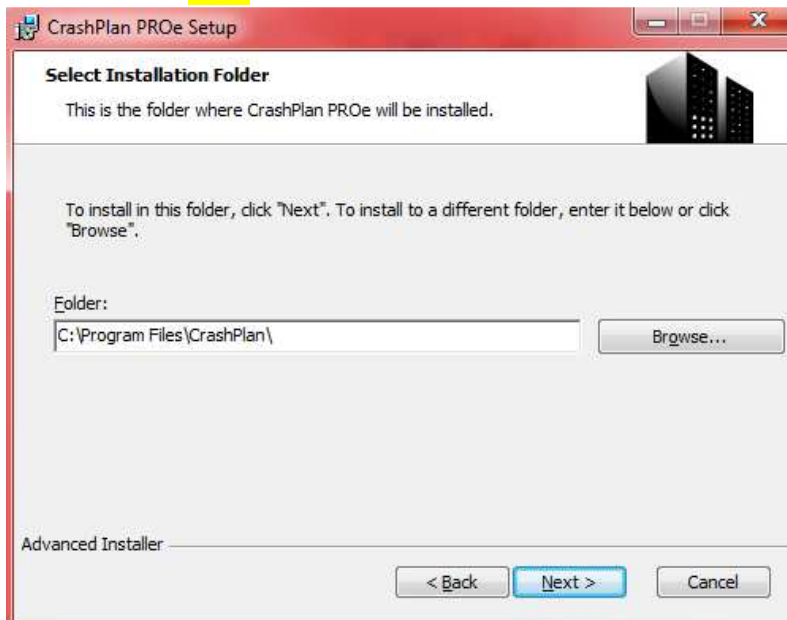
1. Viterbi IT will provide you with the download link to the Crashplan installation files. You may also submit a service request to the Viterbi Service Desk by logging into <https://myviterbi.usc.edu/> or email engrhelp@usc.edu.
2. Run the executable file and click **Next**.



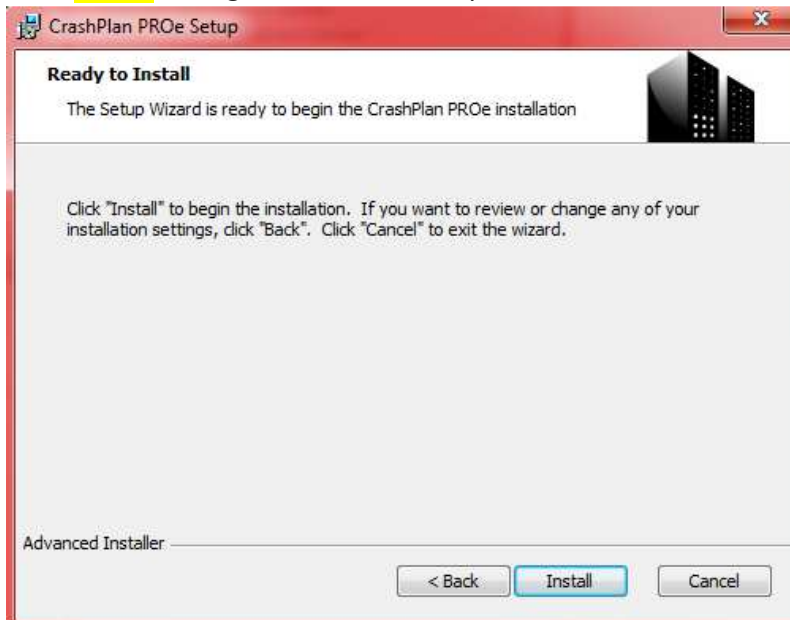
3. Accept the license agreement and click **Next**.



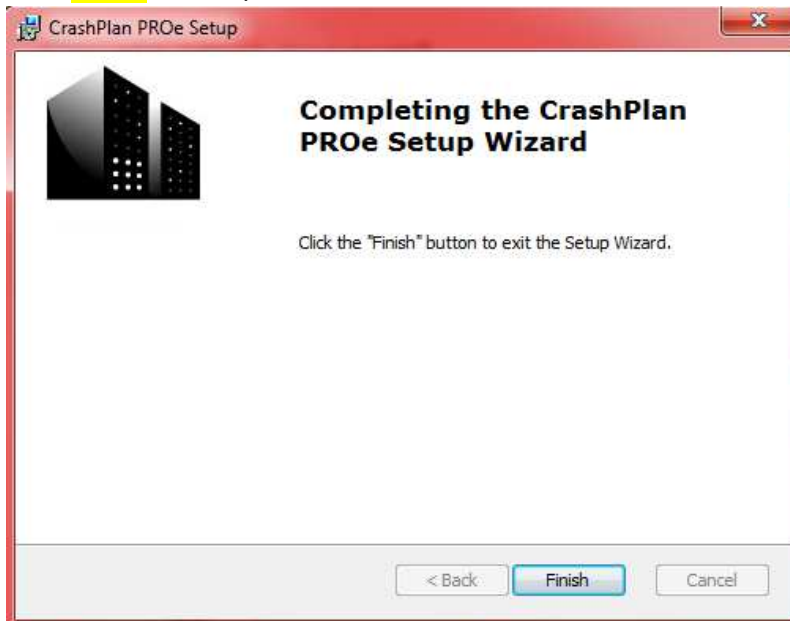
4. Choose where the program will be installed. It is recommend to leave the default location. Click **Next** to continue.



5. Click **Install** to begin the installation process.



6. Click **Finish** to complete the installation.

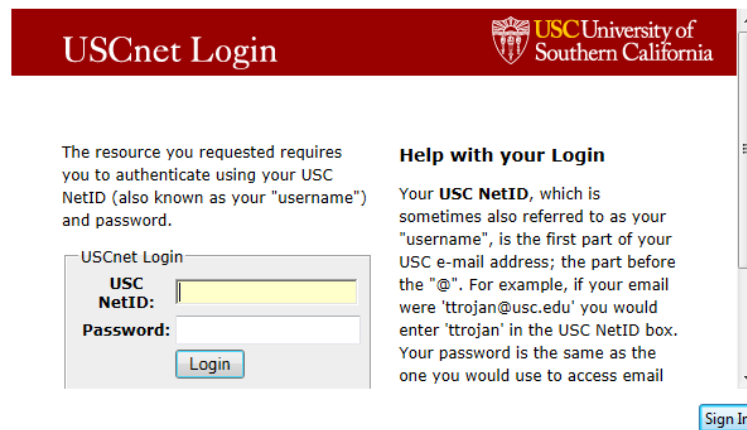


7. Choose existing account and enter your USC user name and password. Click **Login** to continue.

Use existing account

Please enter your username and password. This information identifies you and encrypts your files so nobody else can access them.

New Account Existing Account




8. Once your credentials have been verified click **Sign in** (located in the bottom right corner) to continue.

Use existing account

Please enter your username and password. This information identifies you and encrypts your files so nobody else can access them.

New Account Existing Account


Success.
Please click Sign In below

[Sign In](#)

- The backup process will start automatically and will run in the background. You may close the window. The first backup can take several hours to a day depending on data size and internet connections speed.

